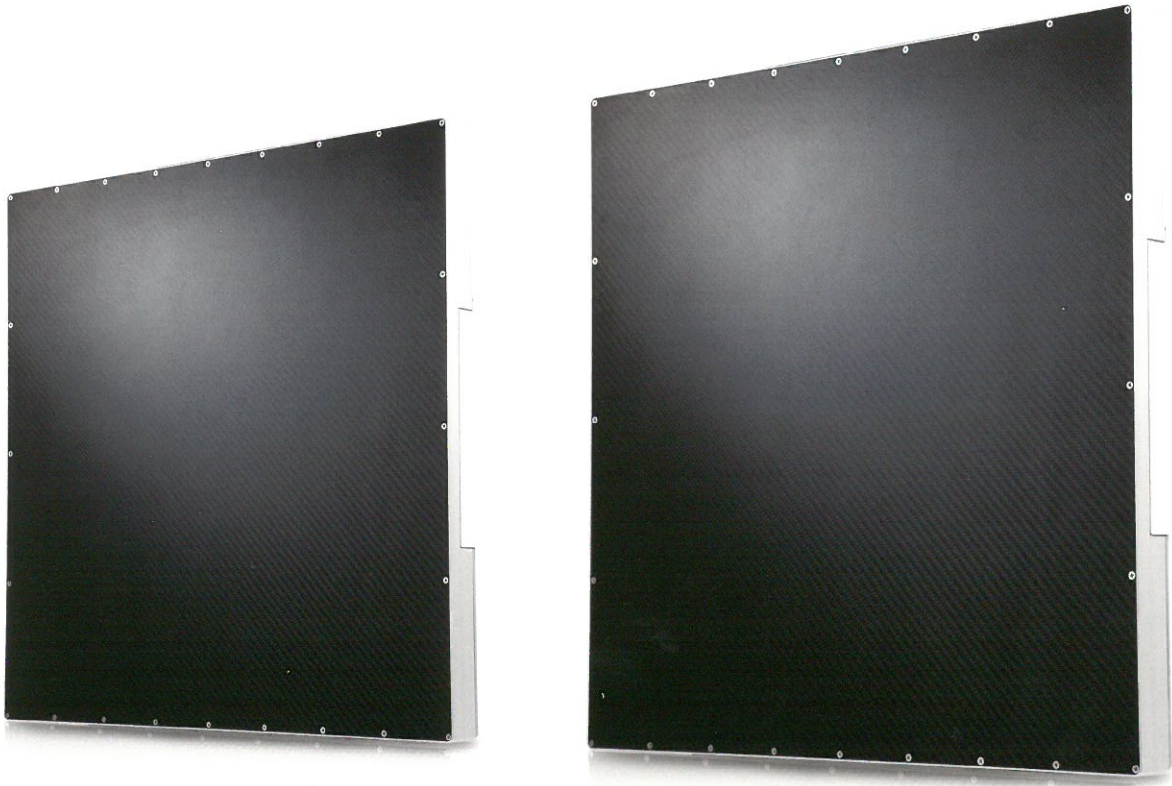

Saturn 8000 17x17

Flat Panel Detector for Digital Radiography

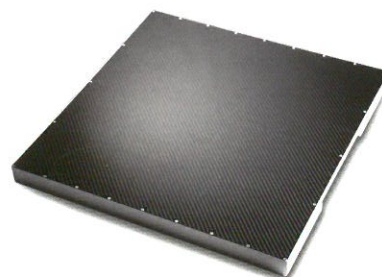


Saturn 8000 17x17 is a NMI's flat panel detector with a large field coverage area of 17"x17", which is designed for general radiographic application using its unique image processing system and proprietary flat panel detector. The active 9.4 Mega-pixel sensor ensures superior image quality to meet market demand for precise diagnosis performance, which is made possible by the NMI's digital radiographic flat panel detector technology. With automatic exposure detection, Saturn 8000 17x17 can be used without connection to the X-ray generator. It works just like CR or film as it is triggered by the radiation, instead of a generator interface connection.

SATURN 8000

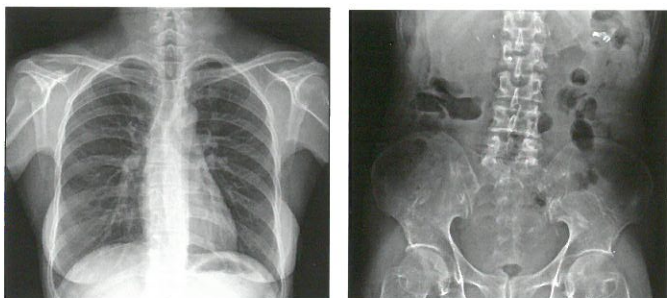
Features

- * Wide active area of 17" x 17"
- * High spatial resolution with 140um pixel array
- * Stable and reliable automatic exposure detection
- * Viewer software running on Windows™ OS (DxWorks)
- * Communication interface through Gigabit Ethernet (1000 BASE-T)
- * Simple and easy integration with all kinds of digital radiography systems



Configuration
Detector
Power Supply Unit

Acquired Images



Drawing



Technical Specification

Application	General radiography
Technology	Flat panel detector : a-Si TFT with PIN diode
Scintillator	CsI:Tl / Gd ₂ O ₂ S:Tb
Pixel Pitch	140um x 140um
Pixels	3,072 x 3,072 pixels
Image Size	17 x 17 inches (43 x 43cm)
A/D Conversion	14 bit
Grayscale	16,384 steps
X-ray Voltage Range	40 ~ 150kVp
X-ray Generator Interface	Line trigger : DR Trigger Mode Auto trigger : AED (Automatic Exposure Detection) Mode
Data Interface	Gigabit Ethernet (1000BASE-T)
Dimensions	470 (W) x 470 (L) x 35 (T) mm
Weight	Approx. 11kg
Operating Environment	15 ~ 35°C, 30 ~ 80% RH (non-condensing)
Power	DC24V, 0.8A

* Specifications are subject to change without prior notification.

FDA Approved  

Office

3F., NO.32, Sec. 2, Zhongyang S. Rd., Beitou Dist., Taipei City 11270, Taiwan
Tel +886-2-2892-2275 Fax +886-2-2892-2172 E-mail Sales@newmedical.com.tw

Factory

41-3, Burim-ro 170beon-gil, Dongan-gu, Anyang-si, Gyeonggi-do, 14055
Republic of KOREA

www.nmi-dr.com

NMI