

# Saturn 8000 14x17N

2nd Generation Wireless Portable Flat Panel Detector  
for Digital Radiography



**Saturn 8000 14x17N** is NMI's 2nd generation wireless portable flat panel detector for digital radiography with highly improved features compared to previous models. The new product has 3 antennas imbedded for stronger Wi-Fi connection and also introduces Near Field Communication (NFC) function for easier configuration and settings. Saturn 8000 14x17N offers a built-in handle and curved edges that allows easier grabbing of the detector. It also includes a LED display for quick status check of battery and Wi-Fi connection. Like previous models, users will still be able to enjoy the stable and reliable automatic exposure detection, direct communication with smart devices and image acquisition & viewer software (DxWorks)

## ***SATURN 8000***

# Saturn 8000 14x17N

2nd Generation Wireless Portable Flat Panel Detector

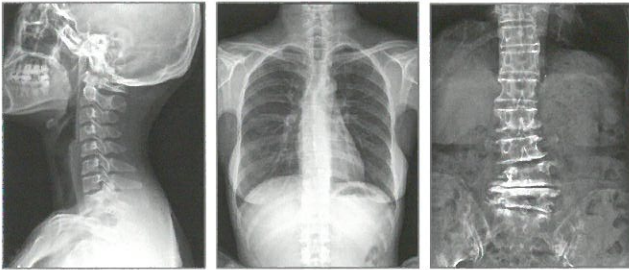
# SATURN 8000

## Features

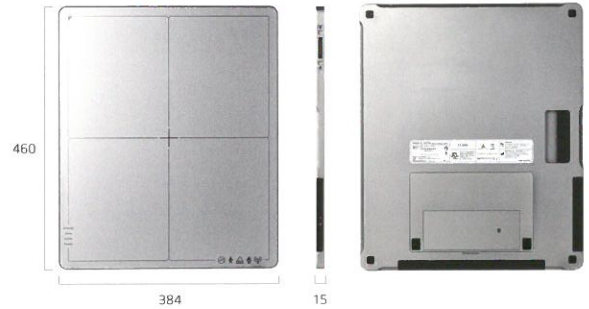
- \* Cassette size detector with 14"x17" active area and IP56 protection
- \* Stronger Wi-Fi connection with dual band (3 antennas / 2.4GHz and 5GHz)
- \* Light but robust design (Less than 3 kg but load limit up to 300 kg)
- \* Easier grabbing with curved edges and built-in handle
- \* Fast configuration with Near Field Communication settings (NFC Tag)
- \* Convenient LED display for quick status check
- \* Stable and reliable automatic exposure detection
- \* Direct communication with smart devices
- \* Viewer software running on Windows™ OS (DxWorks)



## Acquired Images





## Drawing



## Technical Specification

Model Name	Saturn 8000 14x17N CSI / Saturn 8000 14x17N Gadox
Application	General Radiography
Technology	Flat panel detector: a-Si TFT with PIN diode
Scintillator	14x17N CSI: CsI: Tl (Thallium doped Caesium Iodide) 14x17N Gadox: Gd <sub>2</sub> O <sub>2</sub> S:Tb (Gadolinium oxysulfide)
Pixel Pitch	140μm x 140μm
Spatial Resolution	Min. 3.5 lp/mm
Pixels	2560 x 3072 pixels
Image Size	14 x 17 inches (35 x 43 cm)
Grayscale	16 bit
X-ray voltage range	40 – 150kVp
X-ray generator Interface	Line trigger: DR Trigger Mode Auto trigger: AED (Automatic Exposure Detection) Mode
Data Interface	Wired: Gigabit Ethernet (1000BASE-T) via PoE Wireless: IEEE802.11n/ac (2.4GHz/5GHz)
Image Acquisition Time	Wired: 1.5 sec Wireless: 3 sec
Dimensions	384mm × 460mm × 15mm
Weight	Approx. 2.9 kg
Operating Environment	10 – 35°C, 30 ~ 85% (Non-condensing)
Operating Time	6 hours (Capturing), 8 hours (Standby) – when sleep mode is off
Power	Wired: DC +24V, Max. 1.0A Wireless: 3,100mAh X 2 Lithium Ion Batteries

\* Specifications are subject to change without prior notification.

FDA Approved  

## Office

3F., No.32, Sec. 2, Zhongyang S. Rd., Beitou Dist., Taipei City 11270, Taiwan  
Tel +886-2-2892-2275 Fax +886-2-2892-2172 E-mail Sales@newmedical.com.tw

## Factory

41-3, Burim-ro 170beon-gil, Dongan-gu, Anyang-si, Gyeonggi-do, 14055  
Republic of Korea  
www.nmi-dr.com

# NMI